

POS Solo Assembly Instructions

1



Screw cable connector onto base thread.

2



Centrally position panel into base groove with visual to the front.

3



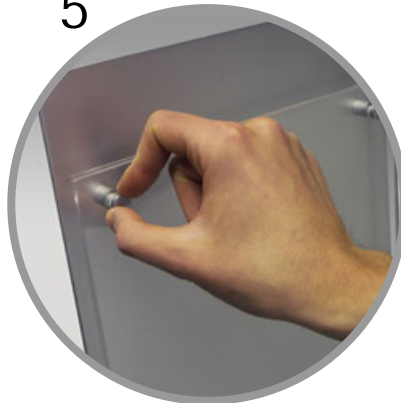
Remove nut, apply slight pressure to top of panel and position free end of cable over thread.

4



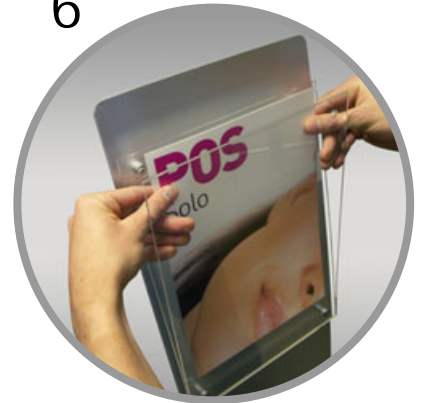
Screw on nut to secure cable which should now be taut - providing gentle curve to the panel (as shown).

5



Remove top two thumb screws and loosen the bottom two.

6



Ease apart two graphic panels and position graphic between them. Re-apply screws and tighten all (finger tight).

